



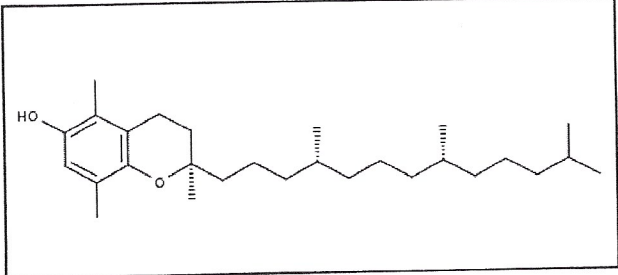
INDOFINE Chemical Company, Inc.

121 Stryker Lane, Bldg. 30
Hillsborough, NJ 08844 USA
Phone: (908) 359-6778; Fax: (908) 359-1179

Certificate Of Analysis

022961S **(+)-beta-TOCOPHEROL** **Lot No.: 21020805**

CAS RN	16698-35-4
MOL FORMULA	C ₂₈ H ₄₈ O ₂
MOL WEIGHT	416,69



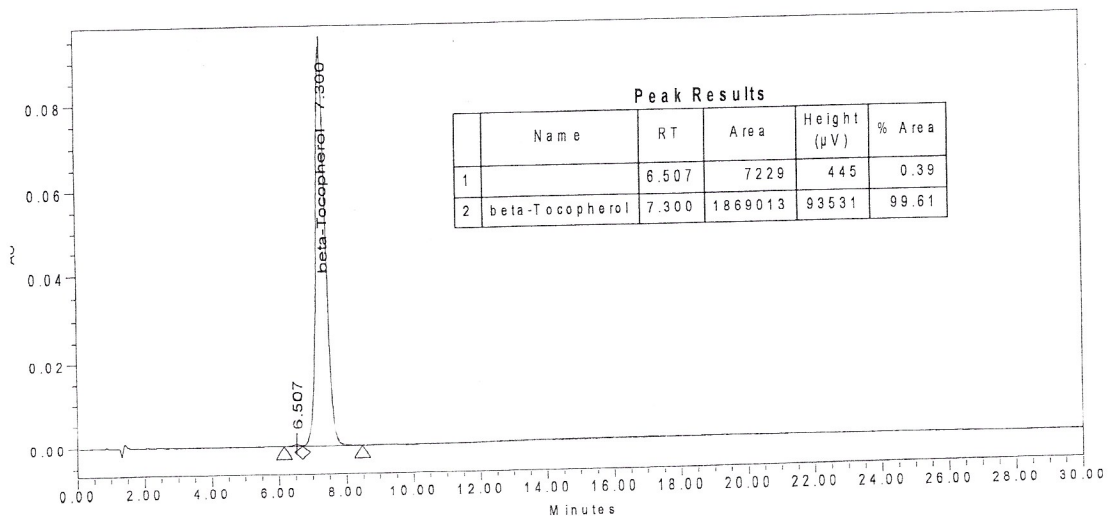
TEST	METHOD	UNIT	SPECIFICATION	RESULT
Appearance	Visual		Oil	Conform
Water content	KF	% w/w		0,2
Residual solvents	GC-HS	% w/w		1,1
Inorganics	ICP-MS	% w/w		< 0,1
Purity	HPLC	% area	≥ 98,0	99,6
Assay	Calculated (*)	% w/w		98,3

(*) Assay = Purity by HPLC x (100 - %water - %solvents - %inorganics)

CHROMATOGRAPHIC PURITY / HPLC

Column : Cosmosil Pye - 2x100mm - 5µm
 Mobile phase : Water + 1% HCOOH/Methanol 10/90
 Detection : UV 290 nm

Temperature : 30°C
 Flow rate : 0,2 ml/min
 Injection volume : 2 µl
 Injection solvent: MeOH



LONG TERM STORAGE : Below -15°C in a dry and dark place

Prepared by:
Ramesh Mandadi
 Ramesh Mandadi
 Director of Operations

TRANSPORT CONDITIONS : Ambient temperature

Reviewed and Approved by:
Sujata Moton
 Sujata Moton
 VP